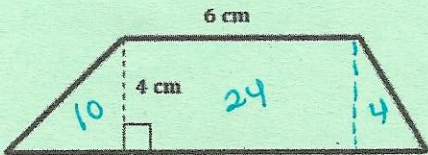
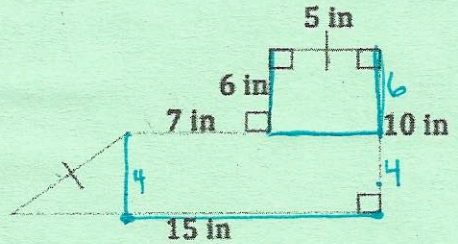


# How to Decompose Composite Figures

1. Decompose the polygon into parallelograms, rectangles, squares or triangles
2. Separate shapes
3. Label side lengths
4. Find area of each shape  $A = b \cdot h$  or  $A = \frac{bh}{2}$
5. Add the areas together to find the area of the composite figure



$\frac{b \cdot h}{2}$	$b \cdot h$	$\frac{b \cdot h}{2}$
$\frac{5 \cdot 4}{2}$	$6 \cdot 4$	$\frac{2 \cdot 4}{2}$
10	+	24
		+
		4
$38 \text{ cm}^2$		



$\frac{b \cdot h}{2}$	$b \cdot h$	$b \cdot h$
$\frac{3 \cdot 4}{2}$	$12 \cdot 4$	$5 \cdot 5$
6	+	48
		+
		30
$84 \text{ in}^2$		