

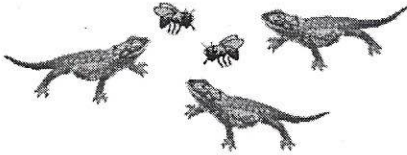
5.2B

Equivalent Ratios (Proportions) Assignment

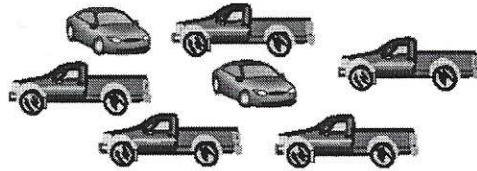
Name _____ Period _____

Write 3 equivalent ratios that describe the collection (not 3 different ways to write the same ratio!)

1. flies to lizards _____



2. cars : trucks _____



State whether the following statements are true or false:

3. 4:1 and 8:3 are equivalent ratios. _____

4. 1:4 and 4:5 are equivalent ratios. _____

5. 3:7 and 6:14 are equivalent ratios. _____

6. 1:6 and 5:30 are equivalent ratios. _____

7. 2:9 and 7:1 are equivalent ratios. _____

Solve each problem using equivalent ratios (Proportions):

8. 120 miles in 2 hours = _____ miles in 3 hours

9. 14 ounces in 4 packages = 77 ounces in _____ packages

10. The Jelly Junior High school color is made by mixing red paint with yellow paint. The ratio of red to yellow is 3 to 5. How much red paint should be mixed with 20 oz of yellow?

11. A cookie recipe for 60 cookies calls for 4 cups of flour. How much flour is needed to make 90 cookies?

12. Jana can read 7 pages of his book in 5 minutes. At this rate, how long will it take him to read the entire 175-page book?

13. If there are 1200 calories in 8 oz of hot fudge, how many calories are in 3 oz of hot fudge?

14. One of the world's largest stained-glass windows is at Kennedy International Airport in New York. It is a rectangle with a height to length ratio of 2 to 25. If the window is 24 feet high, how long is it?