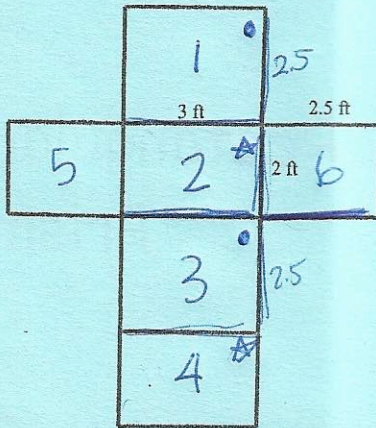


Cube - Find area of one then times by 6

$$3 \cdot 3$$

$$9 \cdot 6$$

$$54 \text{ ft}^2$$



$$1 - 3 \cdot 2.5 = 7.5 \text{ Rectangular}$$

$$2 - 3 \cdot 2 = 6 \text{ Prism}$$

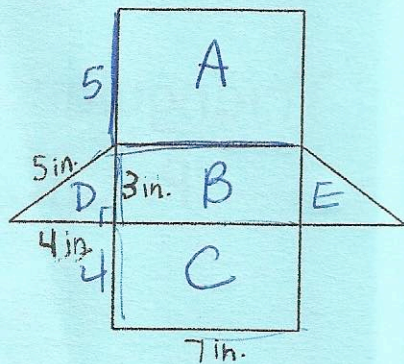
$$3 - 3 \cdot 2.5 = 7.5$$

$$4 - 3 \cdot 2.5 = 7.5$$

$$5 - 2.5 \cdot 2 = 5$$

$$6 - 2.5 \cdot 2 = 5$$

$$+ \\ \hline 37 \text{ ft}^2$$



$$A \square 7 \cdot 5 = 35 \text{ Triangular}$$

$$B \square 7 \cdot 3 = 21 \text{ Prism}$$

$$C \square 7 \cdot 4 = 28$$

$$D \triangle \frac{4 \cdot 3}{2} = 6$$

$$E \triangle \frac{4 \cdot 3}{2} = 6$$

$$96 \text{ in}^2$$